

36 Eade Close, Newton Aycliffe, County Durham, DL5 7QQ
Offers in the region of £249,950



CARVER
RESIDENTIAL
Sales · Lettings · Property Management

A beautifully presented DETACHED family home featuring a MODERN FITTED KITCHEN with integrated appliances, GARDEN ROOM and an INTEGRAL SINGLE GARAGE.

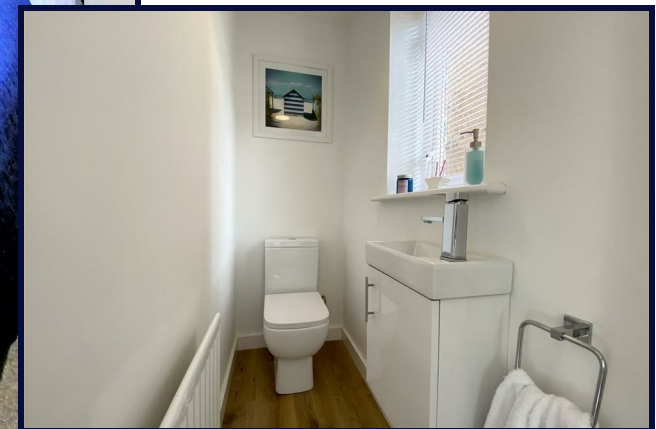
Equipped with uPVC double glazing, solar panels and a hive system to operate the gas central heating to the radiators. The property comprises of a lounge with walk-in bay window, dining room, kitchen, utility room and ground floor WC. There are four good-sized bedrooms to the first floor with a family bathroom/WC and en-suite to the master bedroom. To the front of the property is a double driveway leading to the integral single garage with an external electric car charge point. Offered for sale with NO ONWARD CHAIN we would encourage an internal viewing at the earliest opportunity.







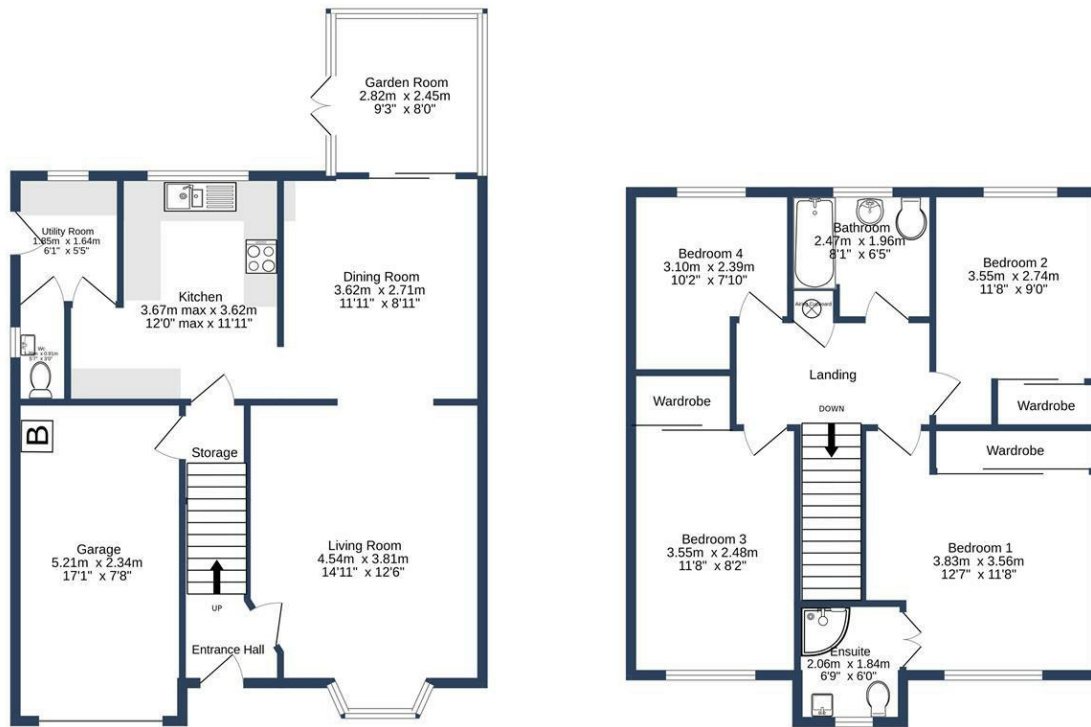
- Modern fitted kitchen
 - Garden room
- En-suite shower room/WC
 - Integral single garage
 - Utility room
 - Ground floor WC
- Beautifully presented throughout
 - Popular location
 - No onward chain







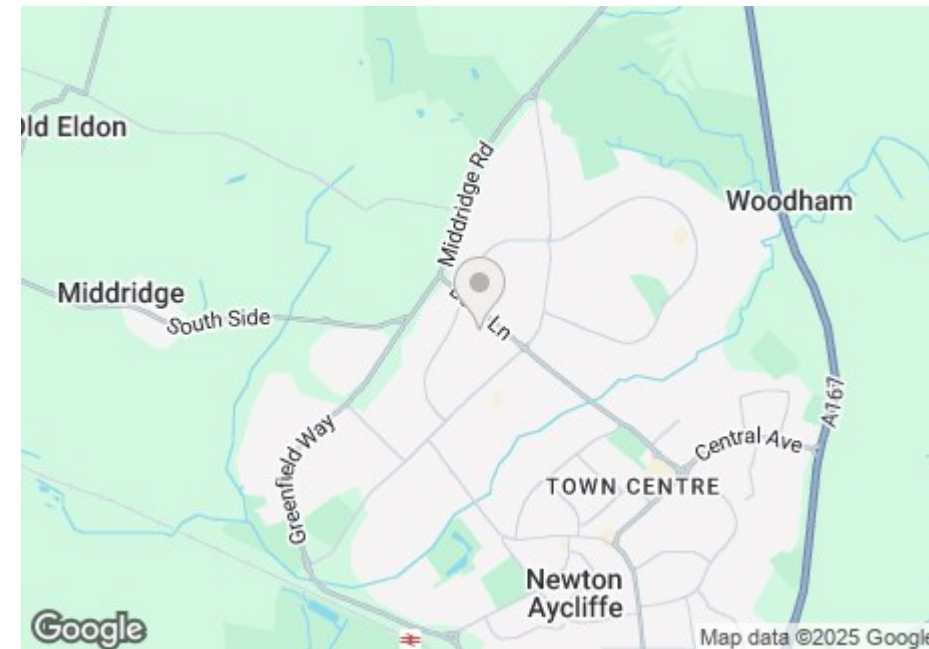




EADE CLOSE, NEWTON AYCLIFFE, DL5 7QQ.

Whilst every attempt has been made to ensure the accuracy of the floorplan contained here, measurements of doors, windows, rooms and any other items are approximate and no responsibility is taken for any error, omission or mis-statement. This plan is for illustrative purposes only and should be used as such by any prospective purchaser. The services, systems and appliances shown have not been tested and no guarantee as to their operability or efficiency can be given.
Made with Metropix ©2023

Energy Efficiency Rating		
	Current	Potential
Very energy efficient - lower running costs		
(92 plus) A		91
(81-91) B	87	
(69-80) C		
(55-68) D		
(39-54) E		
(21-38) F		
(1-20) G		
Not energy efficient - higher running costs		
England & Wales		EU Directive 2002/91/EC



CARVER
RESIDENTIAL
Sales · Lettings · Property Management

aycliffe@carvergroup.co.uk
01325 320676

63 Dalton Way
Newton Aycliffe
County Durham
DL5 4NB