



CARVER
RESIDENTIAL
Sales · Lettings · Property Management

Eastfields Road
School Aycliffe, DL5 6QH

Offers in the region of £295,000

House - Detached
4 Bedroom/s
1 Bathroom/s

A significantly improved DETACHED family home pleasantly situated on this popular development between Newton Aycliffe and Heighington. The property is beautifully presented throughout and features a lovely entrance hallway, an "L" shaped living/dining room, ground floor WC and modern fitted kitchen overlooking the rear garden. There are four generously proportioned bedrooms to the first floor, (principal bedroom having built-in wardrobes), and a luxurious family bathroom/WC with separate corner shower cubicle. Externally there is a driveway suitable for parking up to three vehicles, an integral DOUBLE GARAGE and attractive enclosed gardens to the rear with extensive wood decked area.





Agents Notes

Tenure:- Freehold

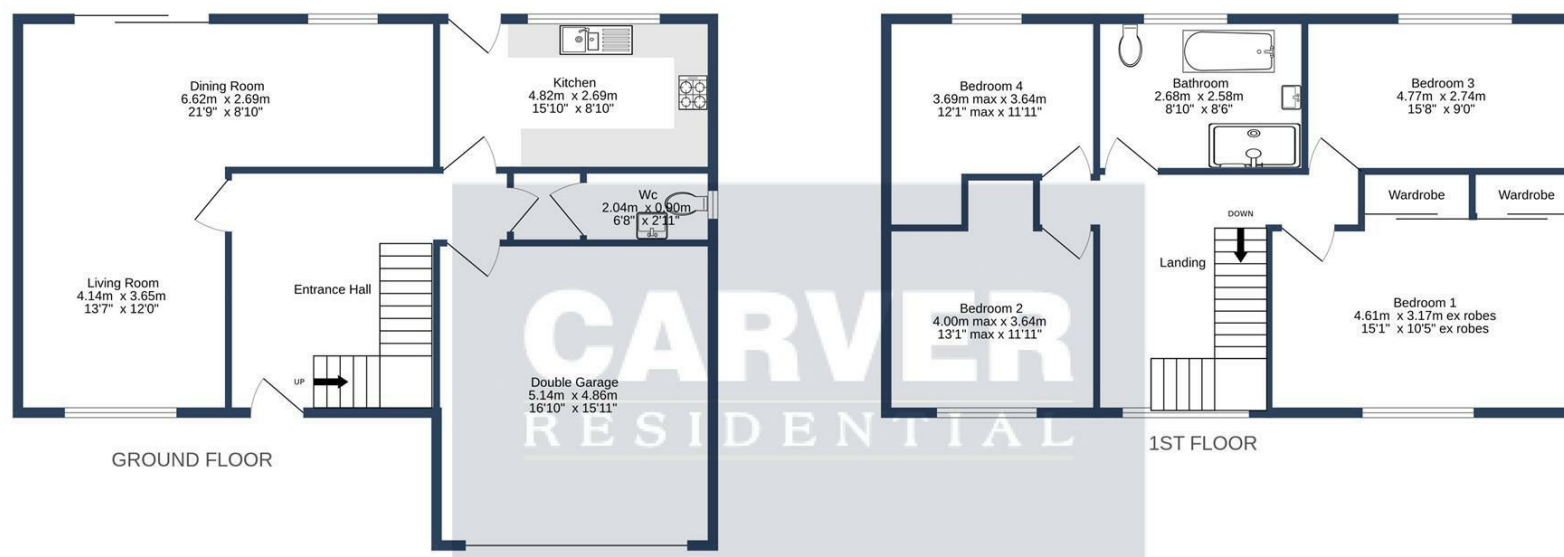
Mains gas, (central heating to radiators), electricity & drainage

uPVC double glazing throughout

Council Tax:- Band E

Local Authority:- Durham County Council

The property is offered for sale with NO ONWARD CHAIN



EASTFIELDS ROAD SCHOOL AYCLIFFE DL56QH

Whilst every attempt has been made to ensure the accuracy of the floorplan contained here, measurements of doors, windows, rooms and any other items are approximate and no responsibility is taken for any error, omission or mis-statement. This plan is for illustrative purposes only and should be used as such by any prospective purchaser. The services, systems and appliances shown have not been tested and no guarantee as to their operability or efficiency can be given.
Made with Metropix ©2023

Energy Efficiency Rating		
	Current	Potential
Vary energy efficient - lower running costs		
(92 plus) A		
(81-91) B		
(69-80) C		
(55-68) D		
(39-54) E		
(21-38) F		
(1-20) G		
Not energy efficient - higher running costs		
England & Wales		
EU Directive 2002/91/EC		

We can search 1,000s of mortgages for you

It could take just 15 minutes with one of our specialist advisers:
Call: 01325 380088. Visit: Any of our Offices. Online: www.mortgageadvicebureau.com/carver



Your home may be repossessed if you do not keep up repayments on your mortgage. There will be a fee for mortgage advice. The actual amount you pay will depend upon your circumstances. The fee is up to 1% but a typical fee is 0.3% of the amount borrowed

MAB 6202



These particulars do not constitute any part of an offer or contract. None of the statements contained in these particulars are to be relied on as statements or representations of fact and any intending purchaser must satisfy himself by inspection or otherwise to the correctness of each of the statements contained in these particulars. The vendor does not make or give, and neither Nick & Gordon Carver Residential or Commercial, Nick & Gordon Carver, nor any person in their employment has any authority to make or give any representation or warranty whatever in relation to this property



14 Duke Street, Darlington
County Durham, DL3 7AA
Tel: 01325 357807
sales@carvergroup.co.uk

26 Market Place, Richmond
North Yorkshire, DL10 4QG
Tel: 01748 825317
richmond@carvergroup.co.uk

43 Dalton Way, Newton Aycliffe
County Durham, DL5 4DJ
Tel: 01325 320676
aycliffe@carvergroup.co.uk

219 High Street, Northallerton
North Yorkshire, DL7 8LW
Tel: 01609 777710
northallerton@carvergroup.co.uk

www.carvergroup.co.uk