



**CARVER**  
RESIDENTIAL  
Sales · Lettings · Property Management

Bailey Court  
Northallerton, DL7 8PR

**Offers in the region of £84,950**

Apartment  
1 Bedroom/s  
1 Bathroom/s

A one bedroomed first floor apartment situated in a popular residential location. The well presented living accommodation benefits from electric heating and Upvc double glazing. The accommodation includes an entrance hall stairs leading to the first floor. There is a spacious living room with arch way to the newly fitted kitchen with white gloss wall and base units. There is a double bedroom and en suite bathroom fitted with a white suite. Externally there is an allocated carparking space. The property is located in an excellent position and is sold with no onward chain.





- One bedroomed first floor apartment
- Electric heating and double glazing
- Kitchen with white gloss fitted units
- Allocated parking space
- Walking distance of High Street and railway station
- Ideal for first time buyer of property investor
- Spacious living room
- Double bedroom with en suite bathroom
- Popular residential location

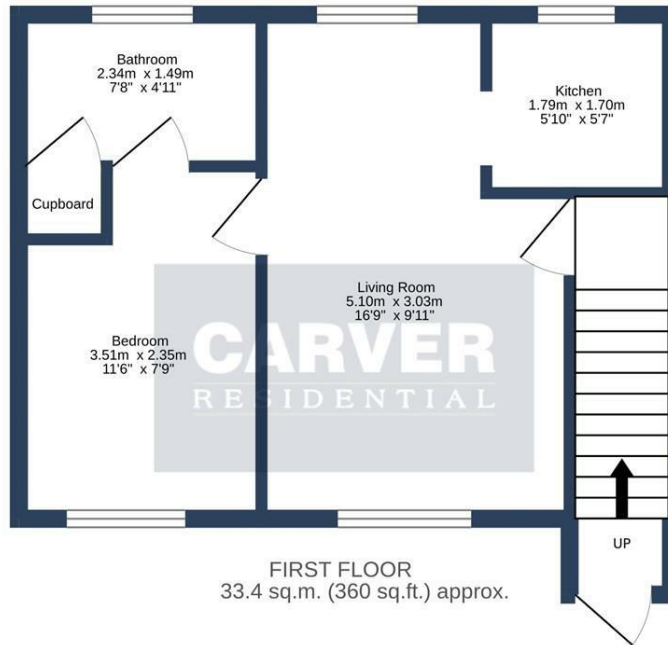
#### GENERAL INFORMATION

Tenure: Leasehold. 999 Yrs from 31/07/1990. Service Charge £529.55. Insurance £320.04 Simarc £30.00

Services: Electric heating, mains electric, water and drainage.

Double glazing

Local Authority: North Yorkshire Band A



Energy Efficiency Rating		Current	Potential
Very energy efficient - lower running costs			
(92 plus) A			
(81-91) B			
(69-80) C			
(55-68) D		61	77
(39-54) E			
(21-38) F			
(1-20) G			
Not energy efficient - higher running costs			
England & Wales		EU Directive 2002/91/EC	

BAILEY COURT, NORTHALLERTON, DL7 8PR.

TOTAL FLOOR AREA: 33.4 sq.m. (360 sq.ft.) approx.

Whilst every attempt has been made to ensure the accuracy of the floorplan contained here, measurements of doors, windows, rooms and any other items are approximate and no responsibility is taken for any error, omission or mis-statement. This plan is for illustrative purposes only and should be used as such by any prospective purchaser. The services, systems and appliances shown have not been tested and no guarantee as to their operability or efficiency can be given.  
Made with Metropix C2024

We can search 1,000s of mortgages for you

It could take just 15 minutes with one of our specialist advisers:  
Call: 01325 380088. Visit: Any of our Offices. Online: [www.mortgageadvicebureau.com/carver](http://www.mortgageadvicebureau.com/carver)



Your home may be repossessed if you do not keep up repayments on your mortgage. There will be a fee for mortgage advice. The actual amount you pay will depend upon your circumstances. The fee is up to 1% but a typical fee is 0.3% of the amount borrowed

MAB 6202



These particulars do not constitute any part of an offer or contract. None of the statements contained in these particulars are to be relied on as statements or representations of fact and any intending purchaser must satisfy himself by inspection or otherwise to the correctness of each of the statements contained in these particulars. The vendor does not make or give, and neither Nick & Gordon Carver Residential or Commercial, Nick & Gordon Carver, nor any person in their employment has any authority to make or give any representation or warranty whatever in relation to this property



14 Duke Street, Darlington  
County Durham, DL3 7AA  
Tel: 01325 357807  
[sales@carvergroup.co.uk](mailto:sales@carvergroup.co.uk)

26 Market Place, Richmond  
North Yorkshire, DL10 4QG  
Tel: 01748 825317  
[richmond@carvergroup.co.uk](mailto:richmond@carvergroup.co.uk)

43 Dalton Way, Newton Aycliffe  
County Durham, DL5 4DJ  
Tel: 01325 320676  
[aycliffe@carvergroup.co.uk](mailto:aycliffe@carvergroup.co.uk)

219 High Street, Northallerton  
North Yorkshire, DL7 8LW  
Tel: 01609 777710  
[northallerton@carvergroup.co.uk](mailto:northallerton@carvergroup.co.uk)

[www.carvergroup.co.uk](http://www.carvergroup.co.uk)