

Jesmond Court Newton Aycliffe DL5 7HU Offers in the region of £185,000



**CARVER**  
RESIDENTIAL  
Sales · Lettings · Property Management



A beautiful significantly improved DETACHED family home pleasantly situated in a CUL-DE-SAC on this popular development. An internal viewing will reveal a fabulous open plan kitchen/dining room, (8.00m x 3.00m approximately), with integrated appliances and BI-FOLD doors opening to the rear garden. An addition there is a GROUND FLOOR WC and 3 BEDROOMS and a family bathroom/WC with modern white suite. Externally there is a driveway to the front suitable for parking 3-4 vehicles, an ATTACHED SINGLE GARAGE and sizeable enclosed gardens to the rear. This is a lovely family home and we would encourage an internal viewing at the earliest opportunity.











Tenure:- Freehold

Mains gas, (central heating to radiators),  
electricity & drainage

uPVC double glazing throughout

Council Tax:- Band C

Local Authority:- Durham County Council



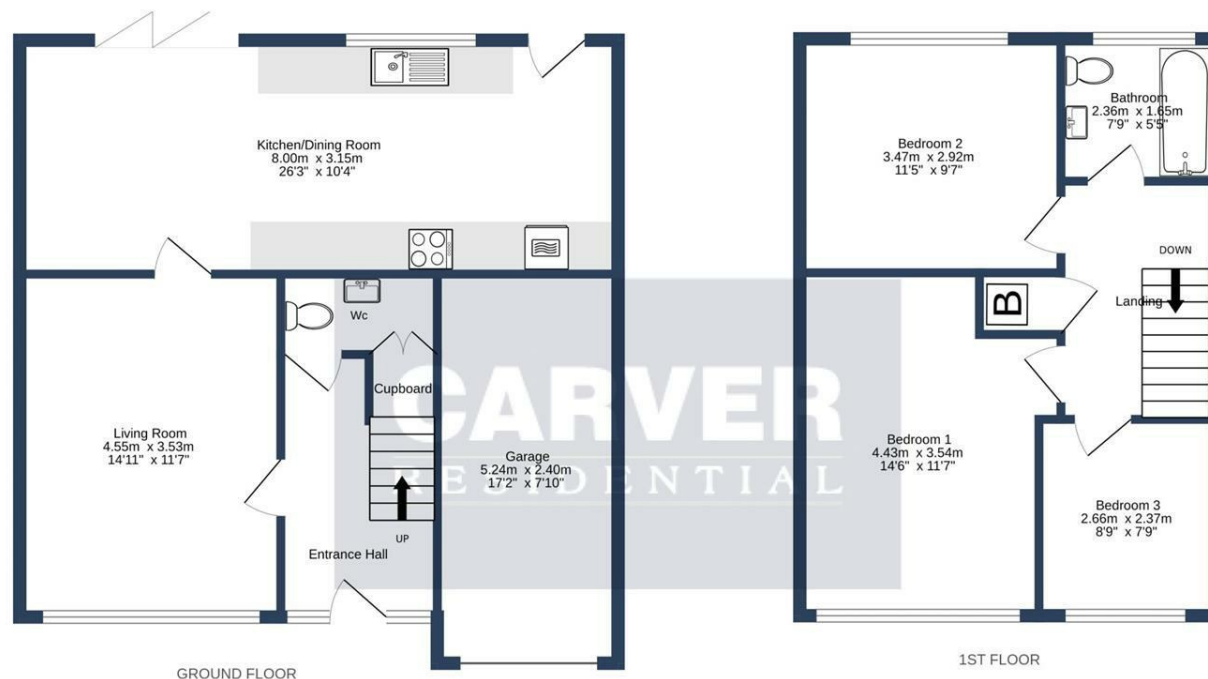




**CARVER**  
RESIDENTIAL  
Sales · Lettings · Property Management







JESMOND COURT, NEWTON AYCLIFFE, DL5 7HU.

Whilst every attempt has been made to ensure the accuracy of the floorplan contained here, measurements of doors, windows, rooms and any other items are approximate and no responsibility is taken for any error, omission or mis-statement. This plan is for illustrative purposes only and should be used as such by any prospective purchaser. The services, systems and appliances shown have not been tested and no guarantee as to their operability or efficiency can be given.  
Made with Metropix ©2024

Energy Efficiency Rating		
	Current	Potential
Very energy efficient - lower running costs		
(92 plus) <b>A</b>		<b>84</b>
(81-91) <b>B</b>		
(69-80) <b>C</b>		
(55-68) <b>D</b>		
(39-54) <b>E</b>		
(21-38) <b>F</b>	<b>67</b>	
(1-20) <b>G</b>		
Not energy efficient - higher running costs		
England & Wales		EU Directive 2002/91/EC

**We can search 1,000s of mortgages for you**

It could take just 15 minutes with one of our specialist advisers:  
Call: 01325 380088. Visit: Any of our Offices. Online: [www.mortgageadvicebureau.com/carver](http://www.mortgageadvicebureau.com/carver)



Your home may be repossessed if you do not keep up repayments on your mortgage.  
There will be a fee for mortgage advice. The actual amount you pay will depend upon your circumstances.  
The fee is up to 1% but a typical fee is 0.3% of the amount borrowed

MAB 6202



These particulars do not constitute any part of an offer or contract. None of the statements contained in these particulars are to be relied on as statements or representations of fact and any intending purchaser must satisfy himself by inspection or otherwise to the correctness of each of the statements contained in these particulars. The vendor does not make or give, and neither Nick & Gordon Carver Residential or Commercial, Nick & Gordon Carver, nor any person in their employment has any authority to make or give any representation or warranty whatever in relation to this property

80 High Street  
Yarm, TS15 9AH  
Tel: 01642 420090  
[yarm@carvergroup.co.uk](mailto:yarm@carvergroup.co.uk)

14 Duke Street, Darlington  
County Durham, DL3 7AA  
Tel: 01325 357807  
[sales@carvergroup.co.uk](mailto:sales@carvergroup.co.uk)

26 Market Place, Richmond  
North Yorkshire, DL10 4QG  
Tel: 01748 825317  
[richmond@carvergroup.co.uk](mailto:richmond@carvergroup.co.uk)

43 Dalton Way, Newton Aycliffe  
County Durham, DL5 4DJ  
Tel: 01325 320676  
[aycliffe@carvergroup.co.uk](mailto:aycliffe@carvergroup.co.uk)

219 High Street, Northallerton  
North Yorkshire, DL7 8LW  
Tel: 01609 777710  
[northallerton@carvergroup.co.uk](mailto:northallerton@carvergroup.co.uk)

[www.carvergroup.co.uk](http://www.carvergroup.co.uk)