

Ryder Court, Newton Aycliffe, DL5 4PB | Offers in the region of £350,000



CARVER
RESIDENTIAL
Sales · Lettings · Property Management

****NO ONWARD CHAIN*** An executive DETACHED BUNGALOW extending to approximately 1,338sq ft and enjoying a most desirable location adjacent to Woodham Golf & Country Club. The property offers extensive living accommodation throughout including a living room, dining room, conservatory, breakfast kitchen and utility room. In addition there is a useful study / occasional fifth bedroom.

There are four bedrooms, (principal bedroom having an en-suite bathroom/WC with family bathroom/WC. Externally the property occupies a large corner plot with extensive private lawned gardens to the rear and driveway suitable parking a number of vehicles which in turn leads to the integral double garage. Whilst the property is in need of modernisation and improvement throughout it offers a rare opportunity to purchase a quality bungalow within a much sought after location.







- Executive detached bungalow
 - 4 bedrooms
- 3 reception rooms and study
 - En-suite bathroom/WC
 - Sizeable corner plot
 - Integral double garage
- Modernisation required throughout
 - Approximately 1,388sq ft
- Desirable location adjacent to Woodham Golf Club
 - No onward chain

Agents Notes
Tenure:- Freehold

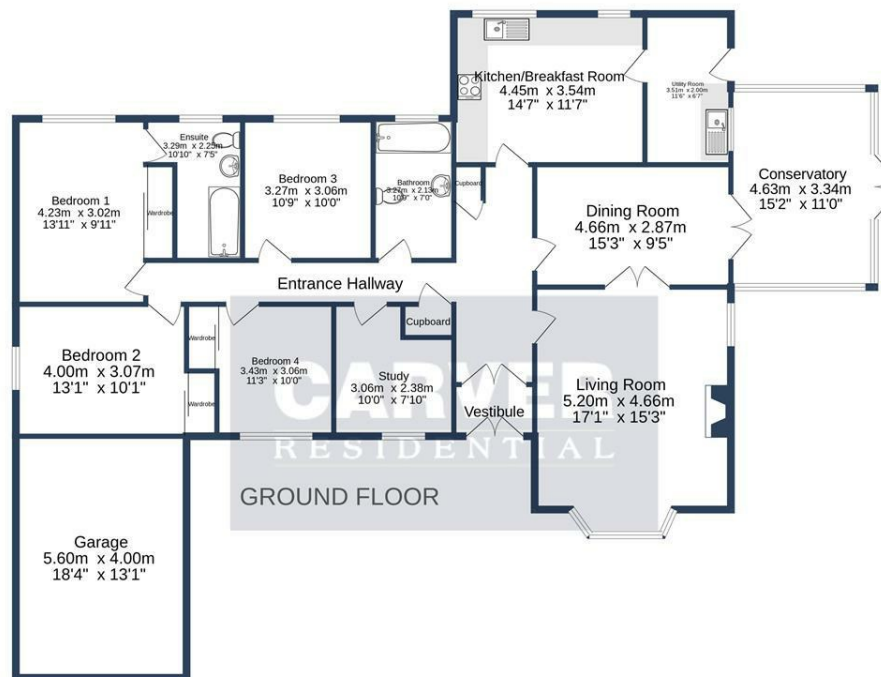
Mains gas, (central heating to radiators), electricity & drainage





CARVER
RESIDENTIAL
Sales · Lettings · Property Management





RYDER COURT, NEWTON AYCLIFFE, DL5 4PB.

Whilst every attempt has been made to ensure the accuracy of the floorplan contained here, measurements of doors, windows, rooms and any other items are approximate and no responsibility is taken for any error, omission or mis-statement. This plan is for illustrative purposes only and should be used as such by any prospective purchaser. The services, systems and appliances shown have not been tested and no guarantee as to their operability or efficiency can be given.
Made with Metropix ©2024

Energy Efficiency Rating		
	Current	Potential
Very energy efficient - lower running costs		
(92 plus) A		
(81-91) B		83
(69-80) C	71	
(55-68) D		
(39-54) E		
(21-38) F		
(1-20) G		
Not energy efficient - higher running costs		
England & Wales		EU Directive 2002/91/EC

We can search 1,000s of mortgages for you

It could take just 15 minutes with one of our specialist advisers:
Call: 01325 380088. Visit: Any of our Offices. Online: www.mortgageadvicebureau.com/carver



Your home may be repossessed if you do not keep up repayments on your mortgage.
There will be a fee for mortgage advice. The actual amount you pay will depend upon your circumstances.
The fee is up to 1% but a typical fee is 0.3% of the amount borrowed

MAB 6202



These particulars do not constitute any part of an offer or contract. None of the statements contained in these particulars are to be relied on as statements or representations of fact and any intending purchaser must satisfy himself by inspection or otherwise to the correctness of each of the statements contained in these particulars. The vendor does not make or give, and neither Nick & Gordon Carver Residential or Commercial, Nick & Gordon Carver, nor any person in their employment has any authority to make or give any representation or warranty whatever in relation to this property

80 High Street
Yarm, TS15 9AH
Tel: 01642 420090
yarm@carvergroup.co.uk

14 Duke Street, Darlington
County Durham, DL3 7AA
Tel: 01325 357807
sales@carvergroup.co.uk

26 Market Place, Richmond
North Yorkshire, DL10 4QG
Tel: 01748 825317
richmond@carvergroup.co.uk

43 Dalton Way, Newton Aycliffe
County Durham, DL5 4DJ
Tel: 01325 320676
aycliffe@carvergroup.co.uk

219 High Street, Northallerton
North Yorkshire, DL7 8LW
Tel: 01609 777710
northallerton@carvergroup.co.uk

www.carvergroup.co.uk