



**CARVER**  
**RESIDENTIAL**  
Sales · Lettings · Property Management

Shafto Way  
Newton Aycliffe, DL5 5QL

**Offers in the region of £100,000**

House - Terraced  
2 Bedroom/s  
1 Bathroom/s



This delightful CHAIN FREE property features two well-proportioned bedrooms, making it an ideal choice for small families, couples, or individuals seeking a comfortable living space.

The heart of the home is the large open-plan kitchen and dining area. This bright and airy space is perfect for enjoying meals with family or hosting gatherings, while the conservatory provides an excellent spot to unwind and enjoy views of the garden.

The sizeable rear garden is a standout feature of this property, offering ample outdoor space for gardening, play, or simply enjoying the fresh air. Additionally, the house is equipped with solar panels, contributing to energy efficiency and potentially lowering utility costs.

Situated in a popular location, this home is conveniently close to a variety of amenities, including shops, schools, and parks, ensuring that everything you need is within easy reach. This property presents a wonderful opportunity for those looking to settle in a vibrant community while enjoying the comforts of a well-appointed home. Don't miss the chance to make this lovely house your new home.







### Agents Notes

Tenure:- Freehold

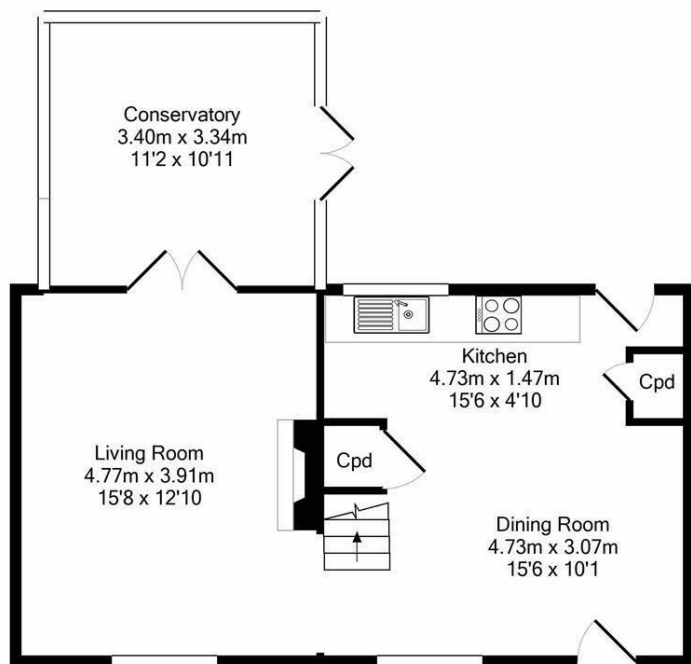
Mains gas, (central heating to radiators), electricity & drainage

uPVC double glazing throughout

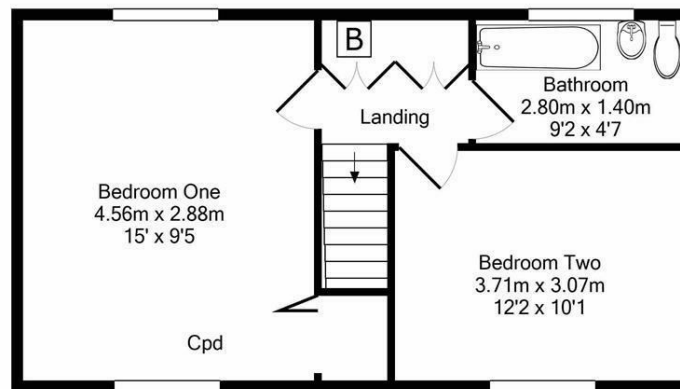
Council Tax:- Band A

Local Authority:- Durham County Council





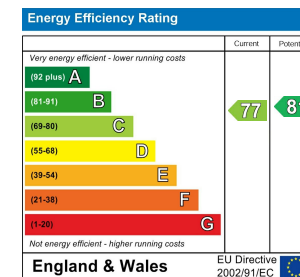
GROUND FLOOR  
APPROX. FLOOR  
AREA 53.6 SQ.M.  
(577 SQ.FT.)



1ST FLOOR  
APPROX. FLOOR  
AREA 41.2 SQ.M.  
(444 SQ.FT.)

SHAFTO WAY, NEWTON AYCLIFFE, DL5 5QL.  
TOTAL APPROX. FLOOR AREA 94.9 SQ.M. (1021 SQ.FT.)

Whilst every attempt has been made to ensure the accuracy of the floor plan contained here, measurements of doors, windows, rooms and any other items are approximate and no responsibility is taken for any error, omission, or mis-statement. This plan is for illustrative purposes only and should be used as such by any prospective purchaser. The services, systems and appliances shown have not been tested and no guarantee as to their operability or efficiency can be given  
Made with Metropix ©2020



We can search 1,000s  
of mortgages for you

It could take just 15 minutes with one of our specialist advisers:  
Call: 01325 380088. Visit: Any of our Offices. Online: [www.mortgageadvicebureau.com/carver](http://www.mortgageadvicebureau.com/carver)



Your home may be repossessed if you do not keep up repayments on your mortgage.  
There will be a fee for mortgage advice. The actual amount you pay will depend upon your circumstances.  
The fee is up to 1% but a typical fee is 0.3% of the amount borrowed

MAB 6202



These particulars do not constitute any part of an offer or contract. None of the statements contained in these particulars are to be relied on as statements or representations of fact and any intending purchaser must satisfy himself by inspection or otherwise to the correctness of each of the statements contained in these particulars. The vendor does not make or give, and neither Nick & Gordon Carver Residential or Commercial, Nick & Gordon Carver, nor any person in their employment has any authority to make or give any representation or warranty whatever in relation to this property



14 Duke Street, Darlington  
County Durham, DL3 7AA  
Tel: 01325 357807  
[sales@carvergroup.co.uk](mailto:sales@carvergroup.co.uk)

26 Market Place, Richmond  
North Yorkshire, DL10 4QG  
Tel: 01748 825317  
[richmond@carvergroup.co.uk](mailto:richmond@carvergroup.co.uk)

43 Dalton Way, Newton Aycliffe  
County Durham, DL5 4DJ  
Tel: 01325 320676  
[aycliffe@carvergroup.co.uk](mailto:aycliffe@carvergroup.co.uk)

219 High Street, Northallerton  
North Yorkshire, DL7 8LW  
Tel: 01609 777710  
[northallerton@carvergroup.co.uk](mailto:northallerton@carvergroup.co.uk)

[www.carvergroup.co.uk](http://www.carvergroup.co.uk)