



CARVER
RESIDENTIAL
Sales · Lettings · Property Management

Yarm Road
Darlington, DL1 1XF

Asking price £70,000

House - Terraced
2 Bedroom/s
1 Bathroom/s

Located on Yarm Road Darlington, this spacious terraced house, built in 1920, presents an excellent opportunity for first-time buyers or those seeking a project to make their own. With two generously sized reception rooms, this property offers ample space for the family.

The two bedrooms are well-proportioned, providing comfortable living spaces that are larger than one might typically expect from a property of this type. The bathroom is conveniently located, ensuring practicality for everyday living.

This home is ideally situated within walking distance of the town center, allowing easy access to a variety of shops, cafes, and amenities. Additionally, the nearby railway station offers excellent transport links, making commuting a breeze for those who travel for work or leisure.

As a market entry-level property, this house is waiting for your personal touch to transform it into your dream home. Whether you are looking to renovate the interiors or maintain its charming character, the possibilities are endless. This property is not just a house; it is a canvas for your creativity and vision. Don't miss the chance to make this lovely terraced house your own in the heart of Darlington.





- Walking distance to town center and fantastic Railway links
- Spacious proportions, bigger than you might think.
- Blank canvas, make it your own!
- Spacious Yard to rear

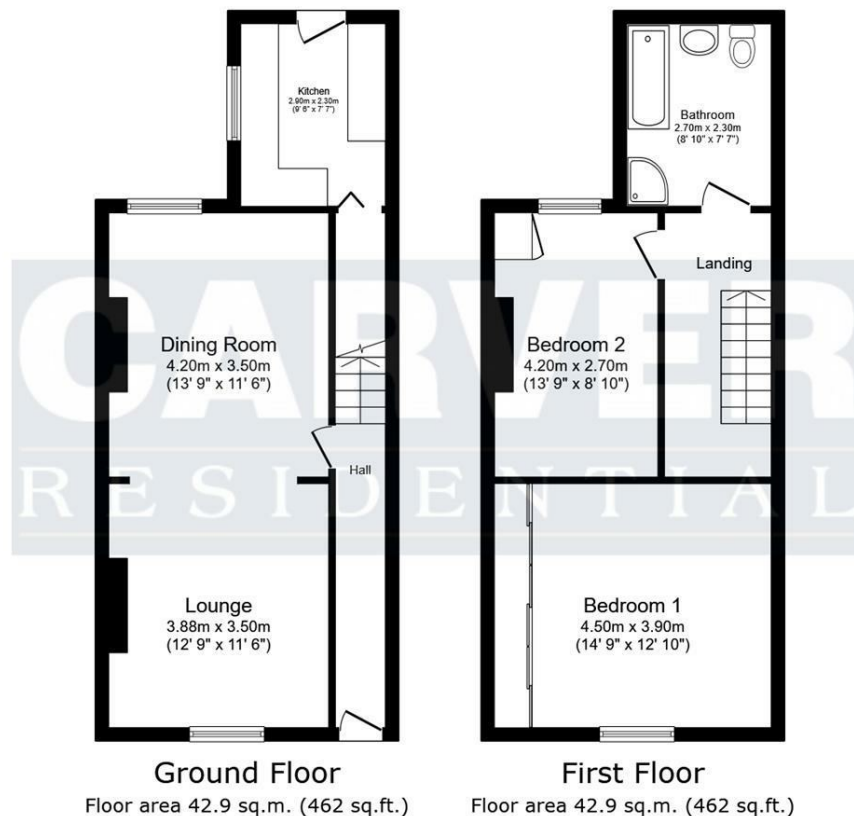
GENERAL INFORMATION:

Tenure: Freehold

Services: Gas central heating, mains electric, water and drainage.

Double glazing

Local Authority: Darlington Borough Council (Tax Banding A)



Energy Efficiency Rating		
	Current	Potential
Very energy efficient - lower running costs		
(92 plus) A		84
(81-91) B		
(69-80) C		
(55-68) D	66	
(39-54) E		
(21-38) F		
(1-20) G		
Not energy efficient - higher running costs		
England & Wales		EU Directive 2002/91/EC

Total floor area: 85.8 sq.m. (923 sq.ft.)

This floor plan is for illustrative purposes only. It is not drawn to scale. Any measurements, floor areas (including any total floor area), openings and orientations are approximate. No details are guaranteed, they cannot be relied upon for any purpose and do not form any part of any agreement. No liability is taken for any error, omission or misstatement. A party must rely upon its own inspection(s). Powered by www.Propertybox.io

We can search 1,000s of mortgages for you

It could take just 15 minutes with one of our specialist advisers:
Call: 01325 380088. Visit: Any of our Offices. Online: www.mortgageadvicebureau.com/carver



Your home may be repossessed if you do not keep up repayments on your mortgage. There will be a fee for mortgage advice. The actual amount you pay will depend upon your circumstances. The fee is up to 1% but a typical fee is 0.3% of the amount borrowed

MAB 6202



These particulars do not constitute any part of an offer or contract. None of the statements contained in these particulars are to be relied on as statements or representations of fact and any intending purchaser must satisfy himself by inspection or otherwise to the correctness of each of the statements contained in these particulars. The vendor does not make or give, and neither Nick & Gordon Carver Residential or Commercial, Nick & Gordon Carver, nor any person in their employment has any authority to make or give any representation or warranty whatever in relation to this property



14 Duke Street, Darlington
Co Durham, DL3 7AA
01325 357807
sales@carvergroup.co.uk

63 Dalton Way, Newton Aycliffe
Co Durham DL5 4NB
01325 320676
aycliffe@carvergroup.co.uk

41 Market Place, Richmond
North Yorkshire, DL10 4QL
01748 825317
richmond@carvergroup.co.uk

219 High Street, Northallerton
North Yorkshire DL7 8LW
01609 777710
northallerton@carvergroup.co.uk

www.carvergroup.co.uk