



CARVER
RESIDENTIAL
Sales • Lettings • Property Management

Kings Close
Catterick Village, Richmond, DL10 7JZ
Price £225,000

House - Semi-Detached
3 Bedroom/s
1 Bathroom/s

*****SPACIOUS FAMILY HOME***EXTENSION TO THE SIDE AND REAR***OPEN PLAN KITCHEN, LIVING DINING ROOM***THREE DOUBLE BEDROOMS***GROUND FLOOR DOUBLE BEDROOM WITH ENSUITE***DRIVEWAY AND LARGE TIMBER SHED***EARLY VIEWING ADVISED***** Internal viewing will reveal a entrance porch opening to entrance hall with stairs to the first floor, under stairs cupboard and door to a fantastic open plan kitchen, living and dining room with space for a large dining table, sofa and fitted floor and wall mounted units and truly fantastic hub for the home. There is a further reception room with log burning fire and reading 'nook' and door to the ground floor double bedroom with ensuite shower room. To the first floor there are two further double bedrooms, one of which could be partitioned to create an extra bedroom. They are serviced by a house bathroom. Externally there is a low maintenance front garden, a drive way to the side with large timber shed with power and lighting. there are lawned gardens to the side and low maintenance rear garden with raised beds and further storage shed.





- THREE DOUBLE BEDROOMS
- LOG BURNER
- POPULAR VILLAGE LOCATION

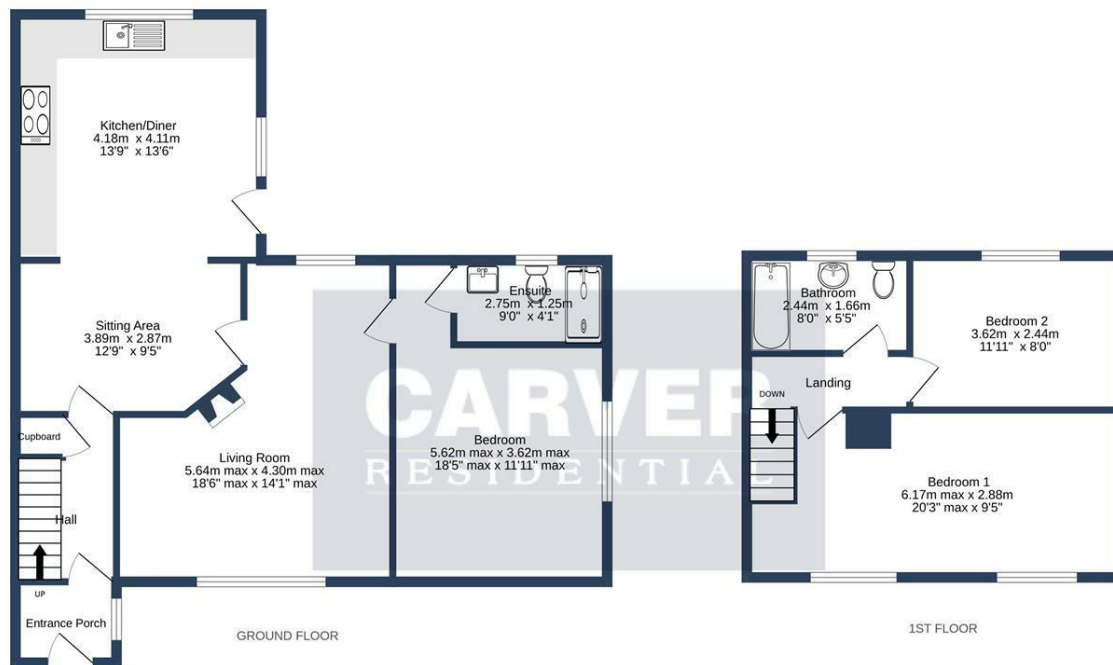
- OPEN PLAN LIVING
- EARLY VIEWING ADVISED
- EXTENDED TO THE SIDE AND REAR

GENERAL INFORMATION

Tenure: Freehold

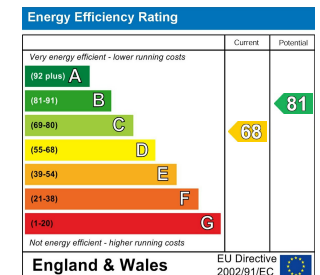
Services: Gas central heating

Richmondshire Council Tax Band B



KINGS CLOSE, CATERICK VILLAGE, DL10 7JZ.

Whilst every attempt has been made to ensure the accuracy of the floorplan contained here, measurements of doors, windows, rooms and any other items are approximate and no responsibility is taken for any error, omission or mis-statement. This plan is for illustrative purposes only and should be used as such by any prospective purchaser. The services, systems and appliances shown have not been tested and no guarantee as to their operability or efficiency can be given.
Made with Metropix ©2025



We can search 1,000s of mortgages for you

It could take just 15 minutes with one of our specialist advisers:
Call: 01325 380088. Visit: Any of our Offices. Online: www.mortgageadvicebureau.com/carver



Your home may be repossessed if you do not keep up repayments on your mortgage.
There will be a fee for mortgage advice. The actual amount you pay will depend upon your circumstances.
The fee is up to 1% but a typical fee is 0.3% of the amount borrowed

MAB 6202



These particulars do not constitute any part of an offer or contract. None of the statements contained in these particulars are to be relied on as statements or representations of fact and any intending purchaser must satisfy himself by inspection or otherwise to the correctness of each of the statements contained in these particulars. The vendor does not make or give, and neither Nick & Gordon Carver Residential or Commercial, Nick & Gordon Carver, nor any person in their employment has any authority to make or give any representation or warranty whatever in relation to this property



14 Duke Street, Darlington
Co Durham, DL3 7AA
01325 357807
sales@carvergroup.co.uk

63 Dalton Way, Newton Aycliffe
Co Durham DL5 4NB
01325 320676
aycliffe@carvergroup.co.uk

41 Market Place, Richmond
North Yorkshire, DL10 4QL
01748 825317
richmond@carvergroup.co.uk

219 High Street, Northallerton
North Yorkshire DL7 8LW
01609 777710
northallerton@carvergroup.co.uk

www.carvergroup.co.uk