



**CARVER**  
RESIDENTIAL  
Sales · Lettings · Property Management

Reeth, Richmond, DL11 6SG

**Offers in the region of £175,000**

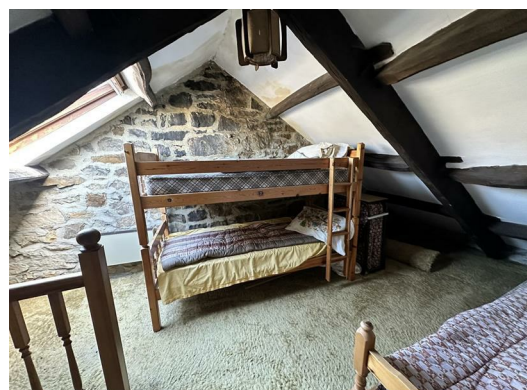
Cottage  
1 Bedroom/s  
1 Bathroom/s



Located in the picturesque village of Reeth ear Richmond, North Yorkshire, this charming character cottage offers great potential, with a number of traditional features. The property comprises a living room and kitchen to the ground floor, with double bedroom and bathroom to the first floor. Stairs lead from the landing to a useful attic room. The quaint surroundings of Swaledale enhance the appeal of this cottage, offering a serene lifestyle amidst stunning natural beauty. This property is brimming with potential, allowing you to put your personal touch on it and create a truly unique home. Whether you are seeking a permanent residence or a weekend getaway, this cottage in Reeth is a wonderful opportunity not to be missed. Embrace the charm of village life while enjoying the comforts of a well-appointed home. There is also useful storage in the stone outbuilding located opposite the front door.







- Character cottage in the Swaledale village of Reeth
- Superb potential
- Useful storage in outbuilding
- Set over three floors
- Fixed staircase to attic room

#### GENERAL INFORMATION

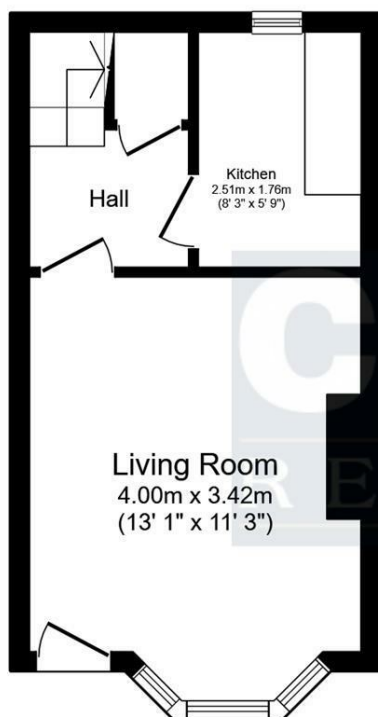
Tenure: Freehold

Services: mains electric, water and drainage.

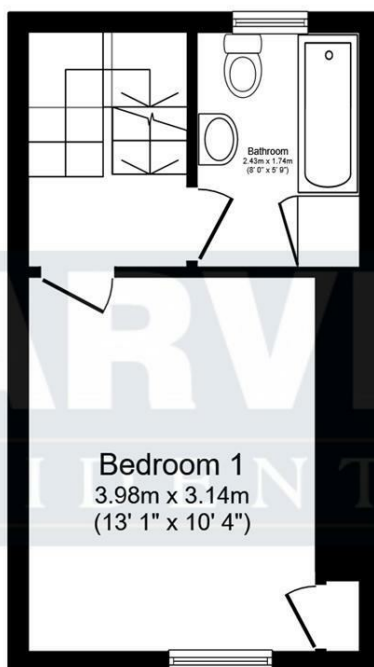
Double glazing to the front aspect of the property

Local Authority: Richmondshire District Council (Tax Banding B)

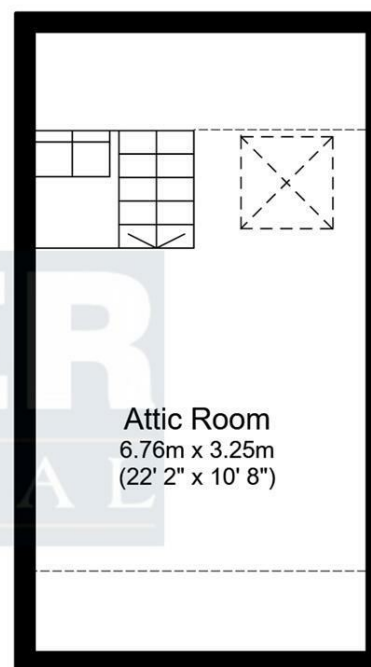




**Ground Floor**  
Floor area 24.2 sq.m. (260 sq.ft.)



**First Floor**  
Floor area 23.4 sq.m. (252 sq.ft.)



**Second Floor**  
Floor area 23.4 sq.m. (252 sq.ft.)

Total floor area: 70.9 sq.m. (764 sq.ft.)

This floor plan is for illustrative purposes only. It is not drawn to scale. Any measurements, floor areas (including any total floor area), openings and orientations are approximate. No details are guaranteed, they cannot be relied upon for any purpose and do not form any part of any agreement. No liability is taken for any error, omission or misstatement. A party must rely upon its own inspection(s). Powered by www.Propertybox.io

Energy Efficiency Rating		
	Current	Potential
Very energy efficient - lower running costs		
(92 plus) <b>A</b>		
(81-91) <b>B</b>		
(69-80) <b>C</b>		
(55-68) <b>D</b>		
(39-54) <b>E</b>		
(21-38) <b>F</b>		
(1-20) <b>G</b>		
Not energy efficient - higher running costs		
<b>England &amp; Wales</b>		
		EU Directive 2002/91/EC

**We can search 1,000s of mortgages for you**

It could take just 15 minutes with one of our specialist advisers:  
Call: 01325 380088. Visit: Any of our Offices. Online: [www.mortgageadvicebureau.com/carver](http://www.mortgageadvicebureau.com/carver)



Your home may be repossessed if you do not keep up repayments on your mortgage. There will be a fee for mortgage advice. The actual amount you pay will depend upon your circumstances. The fee is up to 1% but a typical fee is 0.3% of the amount borrowed

MAB 6202



These particulars do not constitute any part of an offer or contract. None of the statements contained in these particulars are to be relied on as statements or representations of fact and any intending purchaser must satisfy himself by inspection or otherwise to the correctness of each of the statements contained in these particulars. The vendor does not make or give, and neither Nick & Gordon Carver Residential or Commercial, Nick & Gordon Carver, nor any person in their employment has any authority to make or give any representation or warranty whatever in relation to this property



**14 Duke Street, Darlington**  
Co Durham, DL3 7AA  
01325 357807  
[sales@carvergroup.co.uk](mailto:sales@carvergroup.co.uk)

**63 Dalton Way, Newton Aycliffe**  
Co Durham DL5 4NB  
01325 320676  
[aycliffe@carvergroup.co.uk](mailto:aycliffe@carvergroup.co.uk)

**41 Market Place, Richmond**  
North Yorkshire, DL10 4QL  
01748 825317  
[richmond@carvergroup.co.uk](mailto:richmond@carvergroup.co.uk)

**219 High Street, Northallerton**  
North Yorkshire DL7 8LW  
01609 777710  
[northallerton@carvergroup.co.uk](mailto:northallerton@carvergroup.co.uk)