



**CARVER**  
RESIDENTIAL  
Sales · Lettings · Property Management

3, Fife Road,  
Darlington, DL3 7SY  
**Price £360,000**

House - Townhouse  
4 Bedroom/s  
2 Bathroom/s



Love Townhouses? You will not be disappointed here!

Within a very short walk of the town center, welcome to Fife Road in Darlington's popular West end! This is a simply stunning terraced town house, impeccably decorated and transformed, retaining period features but now with modern comfort and style. With four spacious bedrooms and 3 reception areas this property is ideal for families, guests or a home office.

Take a look at the bespoke Kitchen! Complete with Island bench where the chef of the home can still be involved and entertain their guests whilst whipping up a storm in the kitchen. The layout of the home downstairs is thoughtfully designed, there's a large Utility room off the kitchen with a convenient downstairs W/C. To the front a formal lounge. Bespoke open plan Kitchen in the middle and a comfortable modern family living space to the rear overlooking the easily maintained, private safe and secure yard to the rear.

The master bedroom on the top floor feels more like a suite, with dressing area and ensuite. To the first floor, a family Period bathroom is servicing the other 3 spacious bedrooms making morning routines and evening unwinding a breeze.

Darlington is known for its friendly community and excellent amenities. This Fife road location is minutes away from town center shops, restaurants, bars, amazing schools, Sixth Form College and parks, all of which are within easy reach. This property not only offers a comfortable living space but also the opportunity to enjoy the vibrant lifestyle that Darlington has to offer.

So if you are looking to settle down in a welcoming neighbourhood, this Town House on Fife Road is a wonderful choice. With its generous living space and prime location, it is sure to attract interest from a variety of buyers. Do not miss the chance to make this lovely house your new home.







- Stunning Town House, Darlington's West End
- Open plan Bespoke Kitchen / Dining
- Low maintenance private yard to the rear
- 4 Bedrooms in total
- 3 Reception areas
- Formal lounge to front, Family modern living to the rear
- Master suite with ensuite and dressing area
- Amazing location, close to all Darlington's amenities

#### GENERAL INFORMATION:

Tenure: Freehold

Services: Gas central heating, mains electric, water and drainage.  
Double glazing

Local Authority: Darlington Borough Council (Tax Banding C)

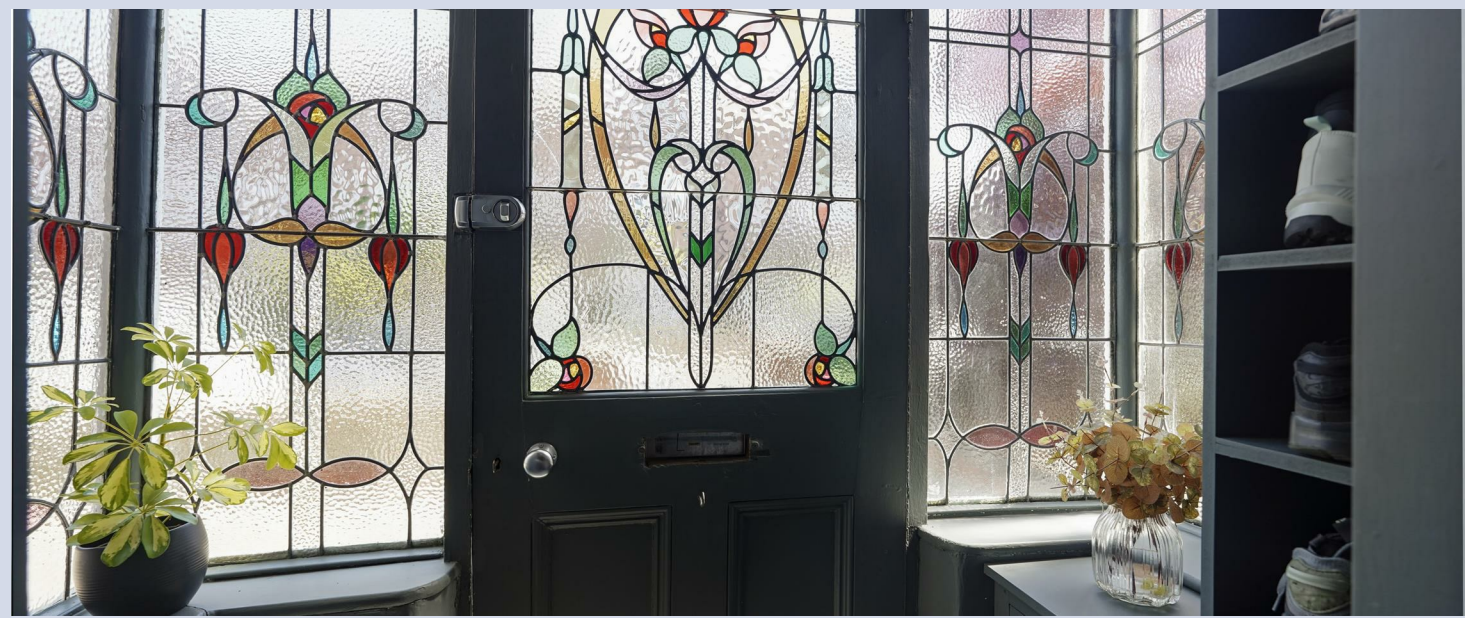
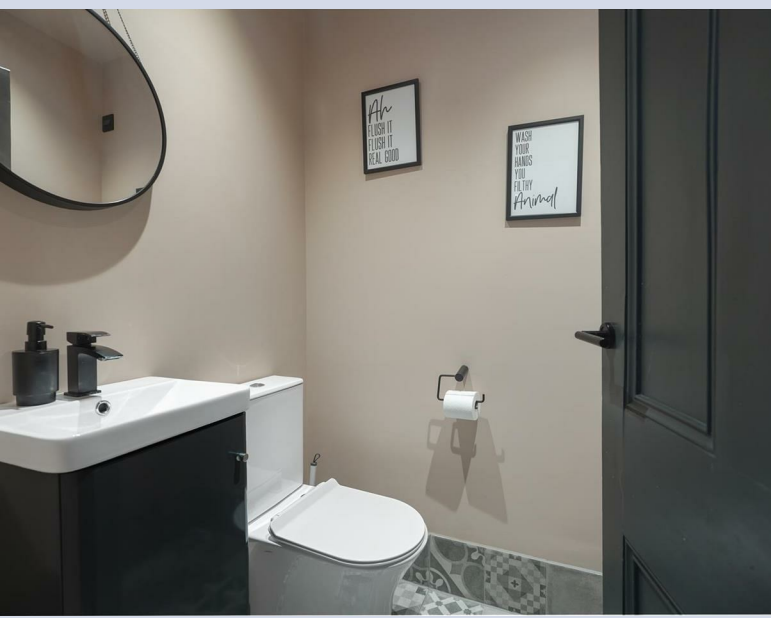




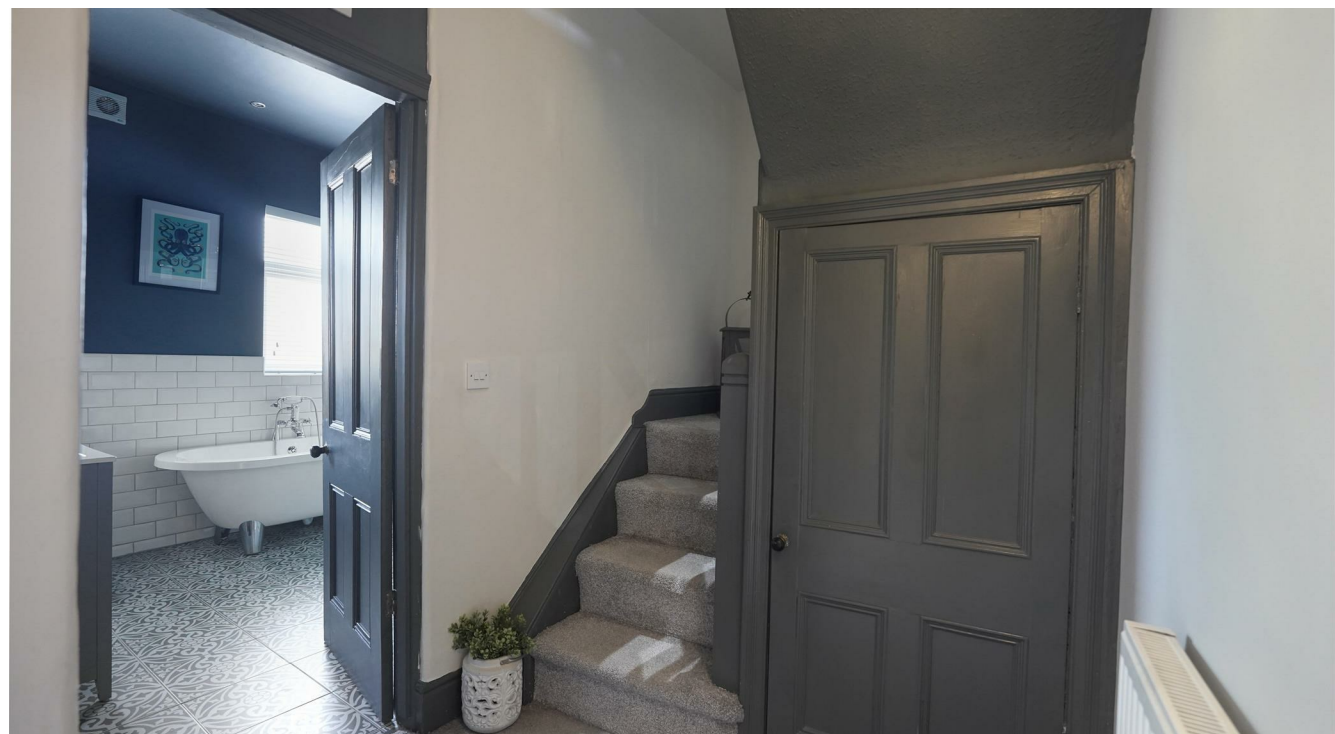




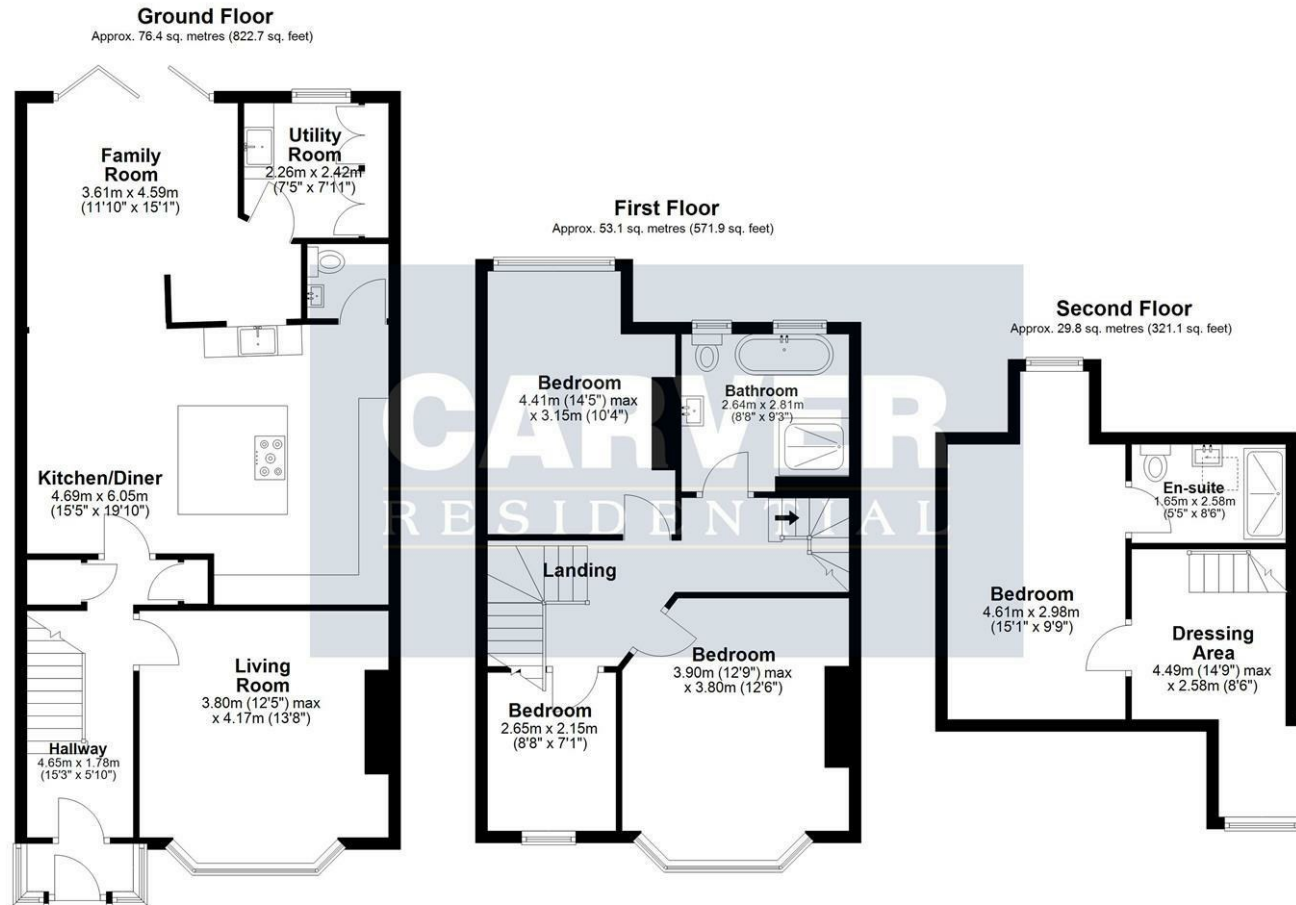












Energy Efficiency Rating		
Very energy efficient - lower running costs	Current	Potential
101-120 <b>A</b>		83
81-100 <b>B</b>		
61-80 <b>C</b>	69	
41-60 <b>D</b>		
21-40 <b>E</b>		
1-20 <b>F</b>		
1-10 <b>G</b>		
Not energy efficient - higher running costs		
England & Wales		EU Directive 2002/91/EC

Total area: approx. 159.4 sq. metres (1715.7 sq. feet)  
**3 Fife Road, DARLINGTON**

**We can search 1,000s of mortgages for you**

It could take just 15 minutes with one of our specialist advisers:  
 Call: 01325 380088. Visit: Any of our Offices. Online: [www.mortgageadvicebureau.com/carver](http://www.mortgageadvicebureau.com/carver)



Your home may be repossessed if you do not keep up repayments on your mortgage.  
 There will be a fee for mortgage advice. The actual amount you pay will depend upon your circumstances.  
 The fee is up to 1% but a typical fee is 0.3% of the amount borrowed

MAB 6202



These particulars do not constitute any part of an offer or contract. None of the statements contained in these particulars are to be relied on as statements or representations of fact and any intending purchaser must satisfy himself by inspection or otherwise to the correctness of each of the statements contained in these particulars. The vendor does not make or give, and neither Nick & Gordon Carver Residential or Commercial, Nick & Gordon Carver, nor any person in their employment has any authority to make or give any representation or warranty whatever in relation to this property

**naea**  
**propertymark**

**PROTECTED**



**14 Duke Street, Darlington**  
 Co Durham, DL3 7AA  
 01325 357807  
[sales@carvergroup.co.uk](mailto:sales@carvergroup.co.uk)

**63 Dalton Way, Newton Aycliffe**  
 Co Durham DL5 4NB  
 01325 320676  
[aycliffe@carvergroup.co.uk](mailto:aycliffe@carvergroup.co.uk)

**41 Market Place, Richmond**  
 North Yorkshire, DL10 4QL  
 01748 825317  
[richmond@carvergroup.co.uk](mailto:richmond@carvergroup.co.uk)

**219 High Street, Northallerton**  
 North Yorkshire DL7 8LW  
 01609 777710  
[northallerton@carvergroup.co.uk](mailto:northallerton@carvergroup.co.uk)

**[www.carvergroup.co.uk](http://www.carvergroup.co.uk)**