



An impressive 5 BEDROOM-bedroom executive detached family home offering a perfect blend of modern living and spacious comfort.

As you step through the inviting entrance hallway, you are greeted by a well-designed layout that includes two reception rooms, perfect for both relaxation and entertaining. The dual aspect living room features bi-fold doors that seamlessly connect the indoor space with the outdoor garden, creating a bright and airy atmosphere. The heart of the home is undoubtedly the comprehensively refurbished "L" shaped kitchen/dining room, which boasts integrated appliances and a utility room, making it ideal for family gatherings and culinary adventures.

The principal bedroom is a true retreat, complete with an en-suite shower room/WC, ensuring privacy and convenience. In addition, there are four further generously sized bedrooms, providing ample space for family or guests. The recently installed family bathroom features a separate corner shower cubicle, catering to the needs of a busy household.

This property is not only a home but a lifestyle choice, situated in a sought-after location on the edge of Woodham. An internal viewing is essential to fully appreciate the accommodation and the quality of living this exceptional property has to offer.





- Executive detached family home in desirable location
- Fabulous comprehensively refurbished "L" shaped kitchen/dining room with integrated appliances
- Principal bedroom with en-suite shower room/WC
- Family bathroom/shower/WC with recently installed contemporary suite
- Driveway for a number of vehicles with integral double garage
- Dual aspect living room with bi-fold doors
- Utility room & ground floor WC
- 4 further good size bedrooms
- Generous corner plot with established private enclosed gardens
- Internal viewing essential

Agents Notes
 Tenure:- Freehold

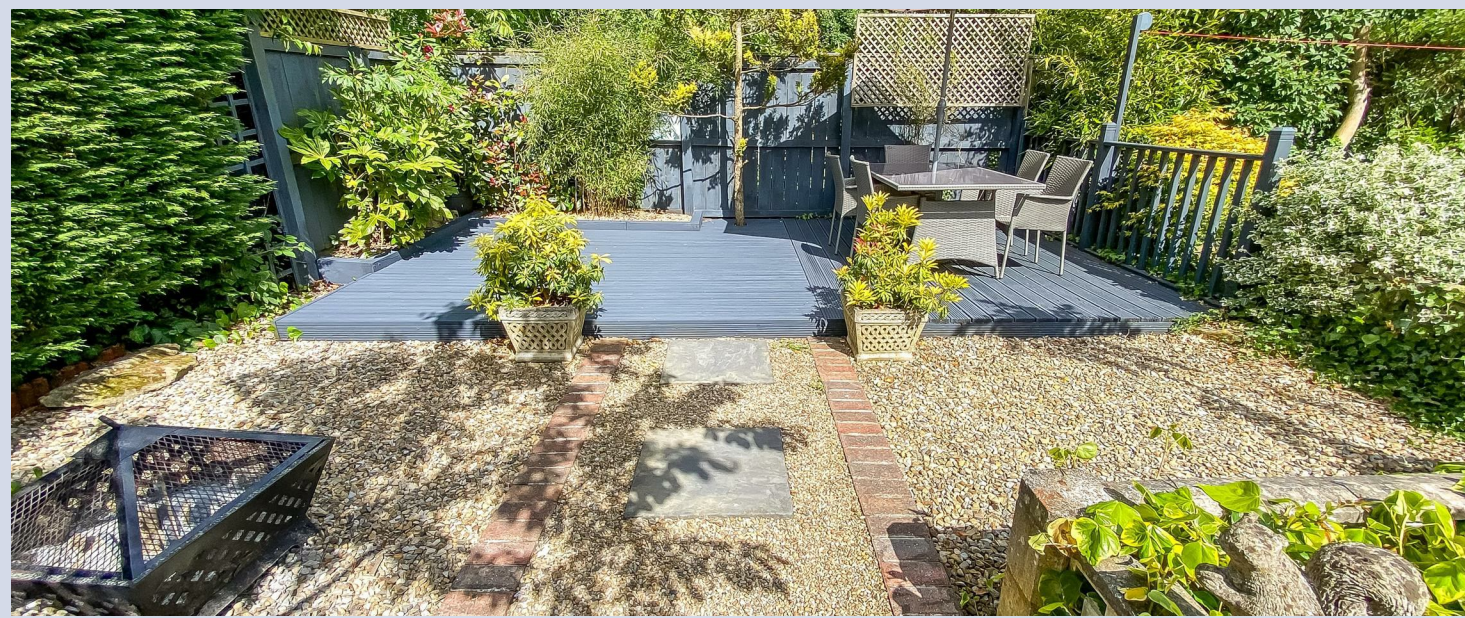
Mains gas, (central heating to radiators), electricity & drainage

uPVC double glazing throughout

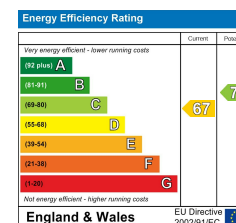
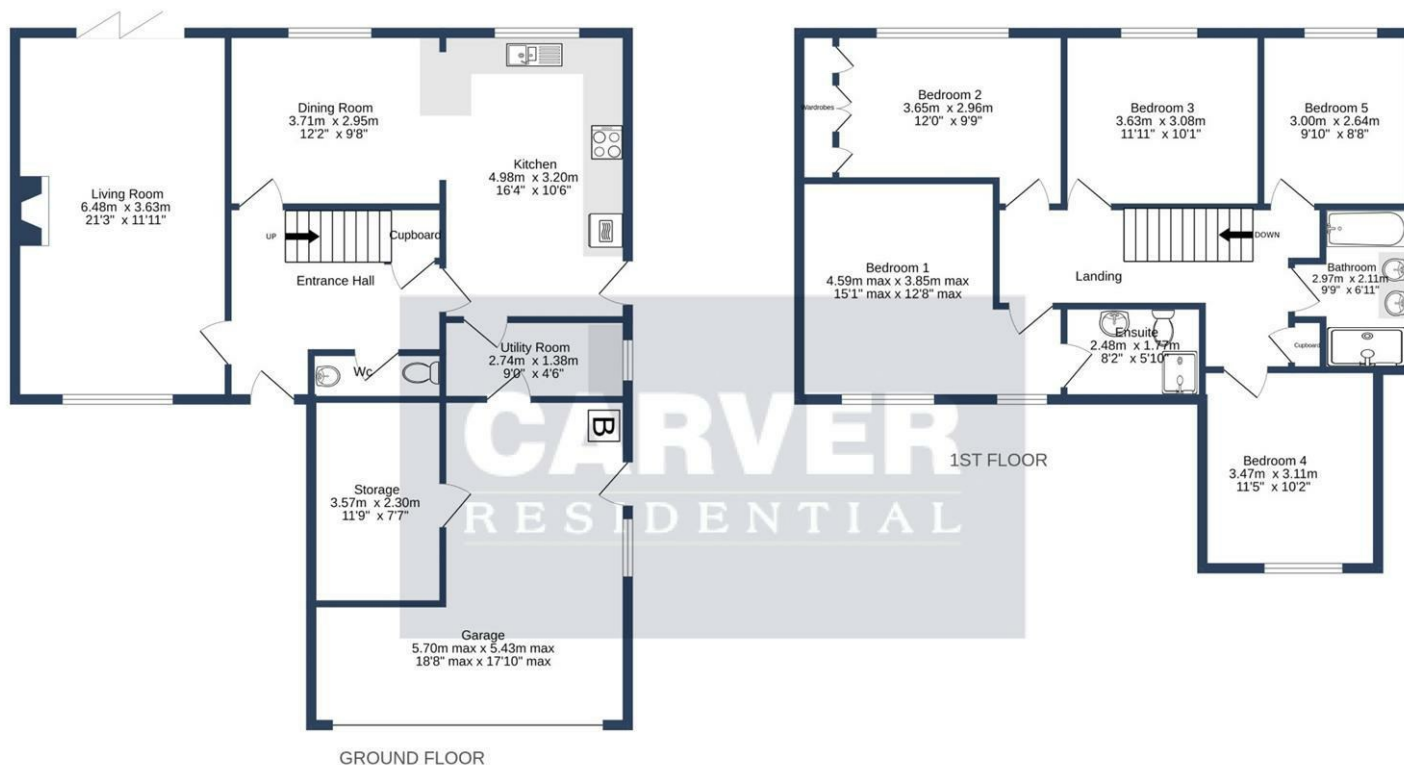
Council Tax:- Band F
 Local Authority:- Durham County Council











WOODHAM GATE, NEWTON AYCLIFFE, DL5 4UB.

Whilst every attempt has been made to ensure the accuracy of the floorplan contained here, measurements of doors, windows, rooms and any other items are approximate and no responsibility is taken for any error, omission or mis-statement. This plan is for illustrative purposes only and should be used as such by any prospective purchaser. The services, systems and appliances shown have not been tested and no guarantee as to their operability or efficiency can be given.
Made with Metropix ©2025

We can search 1,000s of mortgages for you

It could take just 15 minutes with one of our specialist advisers:
Call: 01325 380088. Visit: Any of our Offices. Online: www.mortgageadvicebureau.com/carver



Your home may be repossessed if you do not keep up repayments on your mortgage.
There will be a fee for mortgage advice. The actual amount you pay will depend upon your circumstances.
The fee is up to 1% but a typical fee is 0.3% of the amount borrowed

MAB 6202



These particulars do not constitute any part of an offer or contract. None of the statements contained in these particulars are to be relied on as statements or representations of fact and any intending purchaser must satisfy himself by inspection or otherwise to the correctness of each of the statements contained in these particulars. The vendor does not make or give, and neither Nick & Gordon Carver Residential or Commercial, Nick & Gordon Carver, nor any person in their employment has any authority to make or give any representation or warranty whatever in relation to this property

naea
propertymark

PROTECTED



14 Duke Street, Darlington
Co Durham, DL3 7AA
01325 357807
sales@carvergroup.co.uk

63 Dalton Way, Newton Aycliffe
Co Durham DL5 4NB
01325 320676
aycliffe@carvergroup.co.uk

41 Market Place, Richmond
North Yorkshire, DL10 4QL
01748 825317
richmond@carvergroup.co.uk

219 High Street, Northallerton
North Yorkshire DL7 8LW
01609 777710
northallerton@carvergroup.co.uk

www.carvergroup.co.uk