





A beautifully presented, well maintained 4 BEDROOM semi-detached property pleasantly situated within a lovely cul-de-sac on "The Chase" development.

Upon entering, you are greeted by a spacious dual aspect living/dining room, which is perfect for both relaxation and entertaining. The ground floor also features a convenient WC, enhancing the practicality of the layout. The large fitted kitchen is a standout feature, providing ample space for culinary creativity and family gatherings.

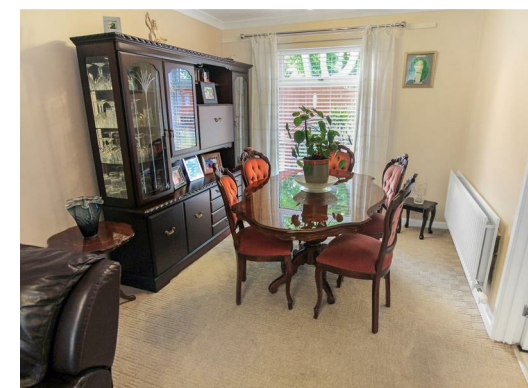
The first floor boasts four well-proportioned bedrooms, ensuring plenty of room for family members or guests. The beautifully appointed family bathroom is a true highlight, complete with a separate shower cubicle, offering both style and functionality.

Outside, the property benefits from a driveway leading to an integral garage for additional storage or parking. The attractive enclosed rear garden provides a private outdoor space, perfect for children to play or for hosting summer barbecues.

Situated in a cul-de-sac, this home is conveniently located close to local schools, making it an excellent choice for families. With its combination of space, modern amenities, and a desirable location, this property is not to be missed. Whether you are looking to buy or rent, this semi-detached house in Newton Aycliffe presents a wonderful opportunity for comfortable family living.







- Semi-detached
- Ground floor WC
- Extended fitted kitchen

- Attractive enclosed rear garden
- Cul-de-sac

#### Agents Notes

Tenure:- Freehold

Mains gas, (central heating to radiators), electricity & drainage

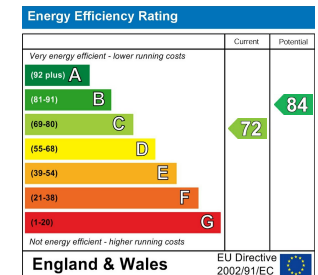
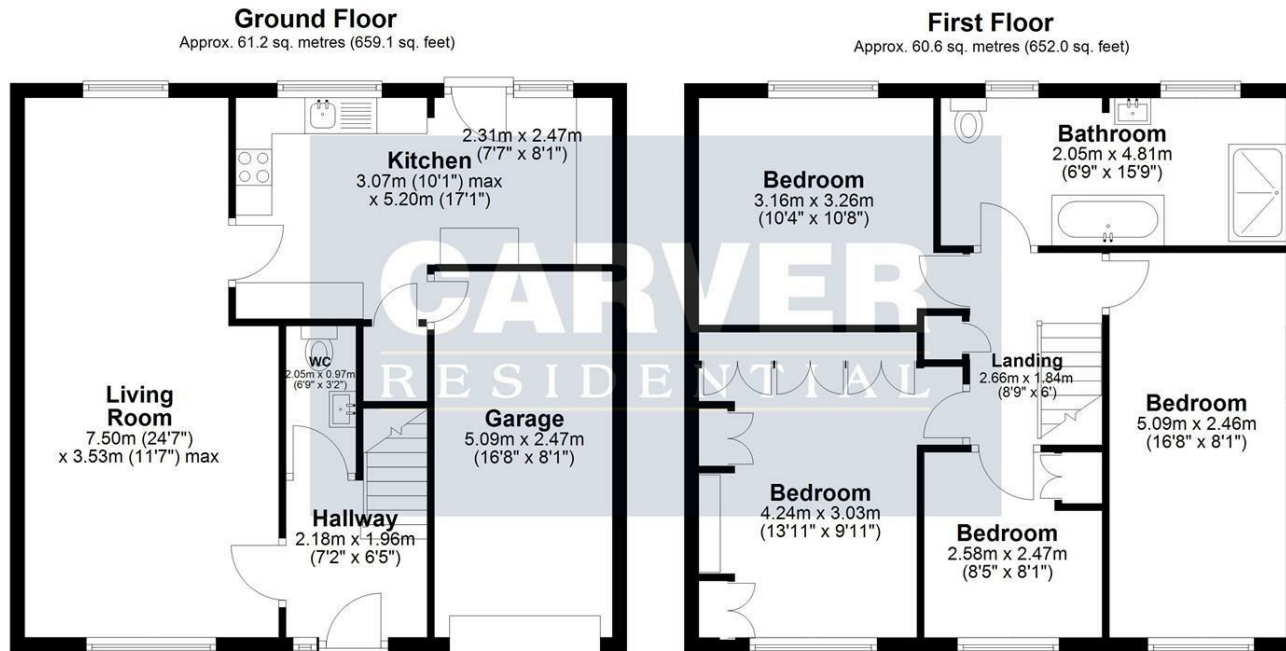
uPVC double glazing throughout

Council Tax:- Band B

Local Authority:- Durham County Council

- 4 bedrooms
- Living/dining room
- Lovely sizeable family bathroom/WC with separate shower cubicle
- Driveway leading to integral garage
- Popular "Chase" location





Total area: approx. 121.8 sq. metres (1311.1 sq. feet)  
**2 The Covert, Newton Aycliffe**

**We can search 1,000s of mortgages for you**

It could take just 15 minutes with one of our specialist advisers:  
Call: 01325 380088. Visit: Any of our Offices. Online: [www.mortgageadvicebureau.com/carver](http://www.mortgageadvicebureau.com/carver)



Your home may be repossessed if you do not keep up repayments on your mortgage.  
There will be a fee for mortgage advice. The actual amount you pay will depend upon your circumstances.  
The fee is up to 1% but a typical fee is 0.3% of the amount borrowed

MAB 6202



These particulars do not constitute any part of an offer or contract. None of the statements contained in these particulars are to be relied on as statements or representations of fact and any intending purchaser must satisfy himself by inspection or otherwise to the correctness of each of the statements contained in these particulars. The vendor does not make or give, and neither Nick & Gordon Carver Residential or Commercial, Nick & Gordon Carver, nor any person in their employment has any authority to make or give any representation or warranty whatever in relation to this property

**naea**  
**propertymark**  
**PROTECTED**

**UK**  
**ALA**  
THE UK ASSOCIATION  
OF LETTING AGENTS

**14 Duke Street, Darlington**  
**Co Durham, DL3 7AA**  
**01325 357807**  
**sales@carvergroup.co.uk**

**63 Dalton Way, Newton Aycliffe**  
**Co Durham DL5 4NB**  
**01325 320676**  
**aycliffe@carvergroup.co.uk**

**41 Market Place, Richmond**  
**North Yorkshire, DL10 4QL**  
**01748 825317**  
**richmond@carvergroup.co.uk**

**219 High Street, Northallerton**  
**North Yorkshire DL7 8LW**  
**01609 777710**  
**northallerton@carvergroup.co.uk**

**[www.carvergroup.co.uk](http://www.carvergroup.co.uk)**