



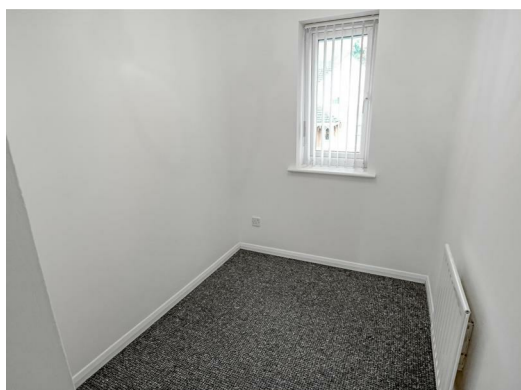
We welcome to the rental market this tastefully presented 3 bedroomed semi-detached property, Set in a quiet cul de sac in the desirable area of Woodham, with local amenities, bus routes and schools in walking distance.

With a double driveway to the side and easy to maintain garden to the front of the property, upon entrance to the hallway a downstairs WC is located to the left, the Large sized lounge which has been newly redecorated and carpeted sits beyond this with view to the front of the property, through the Lounge area you are invited to the open plan kitchen/dining room with upper wall and floor units, oven and hob, the property also boasts a conservatory to the rear through patio doors from the kitchen which open fully should you wish for a more open plan effect, with a further door for access to and overlooking the rear garden, which has a well maintained lawn, with shrubs and gravelled area, a shed for extra storage and patio following round to the rear gate with access to the driveway.

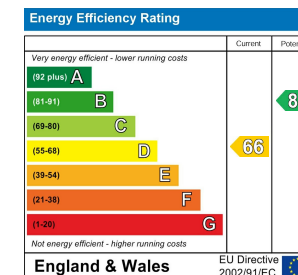
To the First floor upon entering the landing area from the stairs, we have the bathroom which has been newly fitted in 2023, comprising of bath with shower over, wash hand basin and WC. Beside the bathroom is a large double bedroom which overlooks the rear, the front of the property provides a further large sized double bedroom with fitted wardrobes, and a good-sized single bedroom.

The property also benefits from having solar panels fitted which provides cheaper electricity, fully central heated throughout and is UPVC double glazed.





- Tastefully presented 3 bedrooomed semi-detached property
- Double driveway to the side
- Large sized lounge
- Conservatory to the rear
- Bathroom with bath, shower, wash hand basin and WC
- Set in a quiet cul de sac
- Downstairs WC
- Open plan kitchen/dining room
- Rear garden
- Two double bedrooms and one single



**We can search 1,000s of mortgages for you**

It could take just 15 minutes with one of our specialist advisers:  
Call: 01325 380088. Visit: Any of our Offices. Online: [www.mortgageadvicebureau.com/carver](http://www.mortgageadvicebureau.com/carver)



Your home may be repossessed if you do not keep up repayments on your mortgage.  
There will be a fee for mortgage advice. The actual amount you pay will depend upon your circumstances.  
The fee is up to 1% but a typical fee is 0.3% of the amount borrowed

MAB 6202



These particulars do not constitute any part of an offer or contract. None of the statements contained in these particulars are to be relied on as statements or representations of fact and any intending purchaser must satisfy himself by inspection or otherwise to the correctness of each of the statements contained in these particulars. The vendor does not make or give, and neither Nick & Gordon Carver Residential or Commercial, Nick & Gordon Carver, nor any person in their employment has any authority to make or give any representation or warranty whatever in relation to this property



**14 Duke Street, Darlington**  
**Co Durham, DL3 7AA**  
**01325 357807**  
**[sales@carvergroup.co.uk](mailto:sales@carvergroup.co.uk)**

**63 Dalton Way, Newton Aycliffe**  
**Co Durham DL5 4NB**  
**01325 320676**  
**[aycliffe@carvergroup.co.uk](mailto:aycliffe@carvergroup.co.uk)**

**41 Market Place, Richmond**  
**North Yorkshire, DL10 4QL**  
**01748 825317**  
**[richmond@carvergroup.co.uk](mailto:richmond@carvergroup.co.uk)**

**219 High Street, Northallerton**  
**North Yorkshire DL7 8LW**  
**01609 777710**  
**[northallerton@carvergroup.co.uk](mailto:northallerton@carvergroup.co.uk)**

**[www.carvergroup.co.uk](http://www.carvergroup.co.uk)**