



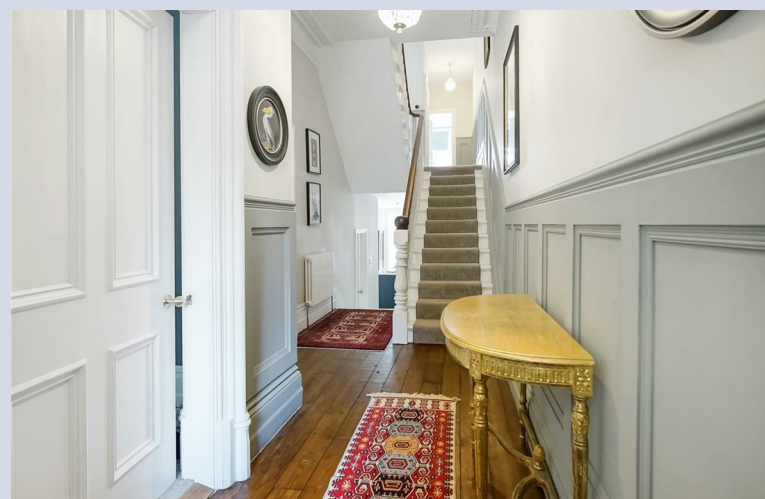
**CARVER**  
RESIDENTIAL  
Sales · Lettings · Property Management

Stanhope Road North  
Darlington, DL3 7AP  
**Price £440,000**

House - Townhouse  
4 Bedroom/s  
4 Bathroom/s



This truly stunning period townhouse must be seen to be appreciated, offering a fantastic mix of period features and modern convenience, this really is the perfect family home. Offered CHAIN FREE and located directly opposite leafy Stanhope Park in Darlington's prestigious West End this lavish four bedroom home has been extensively modernised whilst retaining its wonderful period charm throughout. Accommodation is set out over four floors with the ground floor holding a welcoming, airy hallway with spacious living room with grand fireplace, dining room again with beautiful fireplace, ground floor bathroom and a tremendous kitchen dining room with bi-folding doors onto the rear garden. The first floor holds a sumptuous main bedroom with exquisite en-suite bathroom, two further bedrooms and a house bathroom are also located on the first floor. The second floor holds a further bedroom and another spacious bathroom again finished to the highest standard. A refurbished cellar housing a utility room and useful storage is also present whilst the exterior of the property holds a landscaped rear garden with patio, seating area and artificial turf garden offering an easy maintenance relaxing area. Finished to an amazing standard the property is truly ready to love and offers everything a modern family home may need, wrapped up in a beautiful historic building. EPC rating E, Darlington Borough Council tax band D.







- Period Townhouse
- Wonderful Period Features
- Four Bathrooms
- Accommodation Over Three Floors
- Private Rear Garden
- Fully Modernised
- Two Reception Rooms
- Modern Kitchen Dining Room
- Refurbished Cellar

#### GENERAL INFORMATION

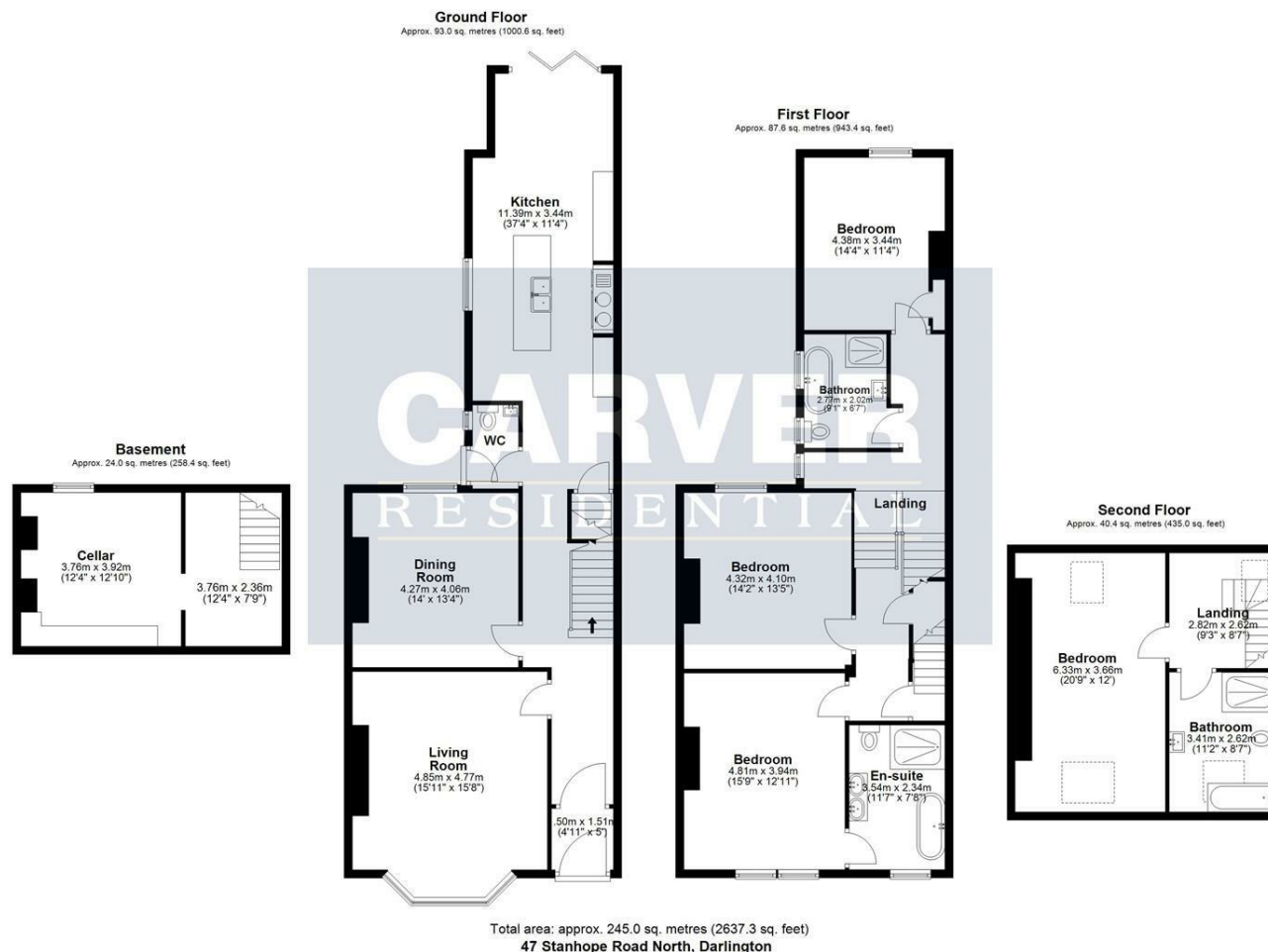
Tenure: Freehold

Services: Gas central heating, mains electric, water and drainage.

Double glazing

Local Authority: Darlington Borough Council (Tax Banding D)





Energy Efficiency Rating		
	Current	Potential
Very energy efficient - lower running costs		
(92 plus) <b>A</b>		<b>75</b>
(81-91) <b>B</b>		
(69-80) <b>C</b>		
(55-68) <b>D</b>		
(39-54) <b>E</b>	<b>54</b>	
(21-38) <b>F</b>		
(1-20) <b>G</b>		
Not energy efficient - higher running costs		
England & Wales		EU Directive 2002/91/EC

**We can search 1,000s of mortgages for you**

It could take just 15 minutes with one of our specialist advisers:  
Call: 01325 380088. Visit: Any of our Offices. Online: [www.mortgageadvicebureau.com/carver](http://www.mortgageadvicebureau.com/carver)



Your home may be repossessed if you do not keep up repayments on your mortgage.  
There will be a fee for mortgage advice. The actual amount you pay will depend upon your circumstances.  
The fee is up to 1% but a typical fee is 0.3% of the amount borrowed

MAB 6202



These particulars do not constitute any part of an offer or contract. None of the statements contained in these particulars are to be relied on as statements or representations of fact and any intending purchaser must satisfy himself by inspection or otherwise to the correctness of each of the statements contained in these particulars. The vendor does not make or give, and neither Nick & Gordon Carver Residential or Commercial, Nick & Gordon Carver, nor any person in their employment has any authority to make or give any representation or warranty whatever in relation to this property



**14 Duke Street, Darlington**  
**Co Durham, DL3 7AA**  
**01325 357807**  
**[sales@carvergroup.co.uk](mailto:sales@carvergroup.co.uk)**

**63 Dalton Way, Newton Aycliffe**  
**Co Durham DL5 4NB**  
**01325 320676**  
**[aycliffe@carvergroup.co.uk](mailto:aycliffe@carvergroup.co.uk)**

**41 Market Place, Richmond**  
**North Yorkshire, DL10 4QL**  
**01748 825317**  
**[richmond@carvergroup.co.uk](mailto:richmond@carvergroup.co.uk)**

**219 High Street, Northallerton**  
**North Yorkshire DL7 8LW**  
**01609 777710**  
**[northallerton@carvergroup.co.uk](mailto:northallerton@carvergroup.co.uk)**

**[www.carvergroup.co.uk](http://www.carvergroup.co.uk)**